

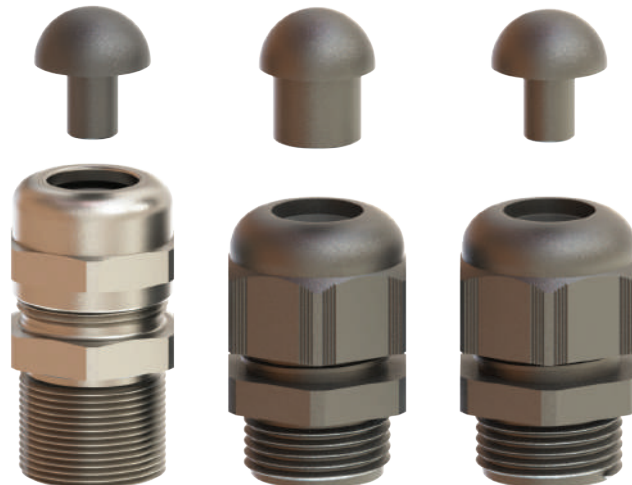
Dome Plugs for Hazardous Applications

Technical Details	
Material	PA 6 (Polyamide 6)
Ingress Protection Rating	IP 68 - 5 Bar, 30 min IP 66
Equipment For	• Gas & Dust potentially explosive atmospheres.
Suitable for use in	Group II Gas Group IIC ZONE1/ZONE2 Group III Dust Group IIIC ZONE21/ZONE 22
Marking Example	
Gland Marking for	Octans BMD EBU.. CE 0722 II 2GD Ex d IIC Gb Ex e IIC Gb Ex tb IIIC Db Ta-40°C +80°C IP66/68 IECEx CES 13.0006X CESI 13 ATEX 018X
	Vela BMD EBS.. CE 0722 II 2GD Ex d IIC Gb Ex e IIC Gb Ex tb IIIC Db Ta-40°C +80°C IP66/68 IECEx CES 13.0006X CESI 13 ATEX 018X
	Lyra BMD BM-X. CE 0722 II 2GD Ex e IIC Gb Ex tb IIIC Db Ta-40°C +80°C IP66/68 IP66/68 IECEx IMQ 13.0003X IMQ 13 ATEX 010X
	Hi-Lyra BMD HIBM-X.. CE 0722 II 2GD Ex e IIC Gb Ex tb IIIC Db Ta-40°C +70°C IP66/68 IECEx IMQ 13.0003X IMQ 13 ATEX 010X
	Vega BMD EHIBM-X.. CE 0722 II 2GD Ex e IIC Gb Ex tb IIIC Db Ta-40°C +70°C IP66/68 IECEx IMQ 13.0003X IMQ 13 ATEX 010X
Impact Test Result	7J
Remarks	• For standard Ex-Proof applications.

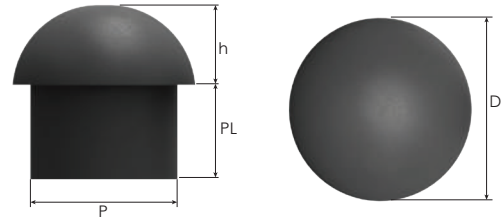


Approvals	Octans and Vela		Lyra, Hi-Lyra and Vega	
	Certificate Number	Standards	Certificate Number	Standards
	IMQ 13 ATEX 018X	EN 60079-0:2012 EN 60079-7:2007 EN 60079-31:2014 EN 60079-1:2007	IMQ 13 ATEX 010X	EN 60079-0:2012 + A11:2013 EN 60079-7:2015 EN 60079-31:2014
	IECEx IMQ 13.0006X	IEC 60079-0:2011 Edition:6 IEC 60079-7:2006 Edition:4 IEC 60079-31:2013 Edition:2 IEC 60079-1:2014 Edition:7	IECEx IMQ 13.0003X	IEC 60079-0:2011 Edition:6.0 IEC 60079-31:2013 Edition:2.0 IEC 60079-7:2016 Edition: 6.0
	20150501-E474828	UL 2225, CAN/CSA-C22.2 No. 60079-0:11 CAN/CSA C22.2 No. 60079-7:12 CAN/CSA-C22.2 No. 60079-31:12		ISO 4892-2
	№ TC RU C-TR.Г505.В.00840	ГОСТ IEC 60079-1:2011 ГОСТ P МЭК 60079-0:2011 ГОСТ P МЭК 60079-7:2012 ГОСТ P МЭК 60079-31:2010 ГОСТ P МЭК 60079-14:2008	№ TC RU C-TR.Г505.В.00840	ГОСТ IEC 60079-1:2011 ГОСТ P МЭК 60079-0:2011 ГОСТ P МЭК 60079-7:2012 ГОСТ P МЭК 60079-31:2010 ГОСТ P МЭК 60079-14:2008
	DNV 12.0052 X	ABNT NBR IEC 60079-0:2013, ABNT NBR IEC 60079-1:2009, ABNT NBR IEC 60079-7:2008 e ABNT NBR IEC 60079-31:2011	DNV 12.0051 X	ABNT NBR IEC 60079-0:2013, ABNT NBR IEC 60079-7:2008 ABNT NBR IEC 60079-31:2011
	E-14044	IEC/EN60079-0, IEC/EN60079-7, IEC/EN60079-31 IEC/EN60079-1, IEC/EN 62444	E-14045	IEC/EN60079-0, IEC/EN60079-7, IEC/EN60079-31 IEC/EN 62444

-For more information see our webpage.



Dome Plugs for Hazardous Applications



Dome plugs for Metal Glands (Octans & Vela)

Size	Plug		Dome Ø	Height	Dome Plug Fit Into Clamping Range Ø min-max		Part Number	Minimum Order Quantity
	Ø	Length			Octans	Vela		
	P mm	PL mm	D mm	h mm	Standard Seal mm	Standard Seal mm	RAL 9005 black	
15	5,8	10,0	15,0	4,0	3,0 - 6,0 / 4,0 - 6,0	4,0 - 6,0	BDPX-15-21	1000
22	11,8	15,0	21,5	6,0	10,0 - 12,0	10,0 - 12,0	BDPX-22-20	1000
28	16,8	17,0	27,5	8,0	14,0 - 17,0	14,0 - 17,0	BDPX-28-21	1000
36	23,8	20,0	36,0	10,0	22,0 - 24,0	22,0 - 24,0	BDPX-36-21	1000
40	27,8	24,0	40,0	10,0	26,0 - 28,0	26,0 - 28,0	BDPX-40-21	1000
50	37,8	24,0	50,0	12,0	35,0 - 38,0	35,0 - 38,0	BDPX-50-21	1000
63	47,8	26,0	63,0	14,0	46,0 - 48,0	-	BDPX-63-21	1000

*Only for Octans and Vela.

Dome plugs for Polyamide Glands (Lyra & Hi-Lyra & Vega)

Size	Plug		Dome Ø	Height	Dome Plug Fit Into Clamping Range Ø min-max				Part Number	Minimum Order Quantity
	Ø	Length			Lyra	Hi-Lyra & Vega	Hi-Lyra (DS) & Vega (DS)			
	P mm	PL mm	D mm	h mm	Standard Seal mm	Standard Seal mm	Outer Seal mm	Double Seal mm	RAL 9005 black	
9	4,0	12,0	9,2	4,0	-	-	-	3,0 - 6,5	BDPX-09-21	1000
	6,4	12,0	9,2	4,0	-	4,0 - 6,5	4,0 - 6,5	-	BDPX-09-22	1000
11	5,0	14,0	10,5	5,0	-	-	-	4,0 - 8,0	BDPX-11-21	1000
	8,0	13,7	10,5	4,7	-	5,0 - 8,0	5,0 - 8,0	-	BDPX-11-22	1000
13	7,0	15,0	13,3	5,7	-	-	-	4,0 - 10,0	BDPX-13-21	1000
	9,7	9,0	13,3	5,3	5,0 - 10,0	6,0 - 10,0	6,0 - 10,0	-	BDPX-13-22*	1000
	9,7	15,0	13,3	5,7	5,0 - 10,0	6,0 - 10,0	6,0 - 10,0	-	BDPX-13-22S	1000
16	7,0	14,0	15,8	7,5	-	-	-	4,0 - 13,0	BDPX-16-20	1000
	8,5	13,0	15,8	7,7	-	-	-	6,0 - 12,0	BDPX-16-21	1000
	12,0	13,0	15,8	8,0	6,0 - 12,0	7,0 - 12,0	7,5 - 12,0	-	BDPX-16-22	1000
	13,0	14,0	15,8	7,5	-	7,0 - 13,0	7,0 - 13,0	-	BDPX-16-23	1000
18	11,0	13,5	18,0	8,5	-	-	-	8,0 - 14,0	BDPX-18-21	1000
	13,6	13,5	18,0	8,7	10,0 - 14,0	11,0 - 14,0	11,0 - 14,0	-	BDPX-18-22	1000
20	13,0	14,5	20,0	7,0	-	-	-	9,0 - 17,0	BDPX-20-21	1000
	16,4	14,5	19,9	7,3	11,0 - 17,0	12,0 - 17,0	13,0 - 17,0	-	BDPX-20-22	1000
22	14,0	14,0	22,0	9,5	-	-	-	10,0 - 18,0	BDPX-22-21	1000
	17,8	14,0	22,0	10	13,0 - 18,0	14,0 - 18,0	13,0 - 18,0	-	BDPX-22-22	1000
24	16,1	15,5	24,0	9,0	-	-	-	12,0 - 21,0	BDPX-24-21	1000
	20,4	15,5	24,1	9,2	15,0 - 21,0	16,0 - 21,0	16,0 - 21,0	-	BDPX-24-22	1000
29	19,7	15,0	28,5	9,7	-	-	-	14,0 - 25,0	BDPX-29-21	1000
	25,0	15,0	28,5	9,7	18,0 - 25,0	19,0 - 25,0	20,0 - 25,0	-	BDPX-29-22	1000
32	20,5	15,8	31,5	9,2	-	-	-	17,0 - 28,0	BDPX-32-21	1000
	27,3	15,8	31,5	9,2	19,0 - 28,0	20,0 - 28,0	21,0 - 28,0	-	BDPX-32-22	1000
37	25,7	17,0	36,8	10,7	-	-	-	21,0 - 32,0	BDPX-37-21	1000
	31,8	17,0	36,8	10,7	22,0 - 32,0	23,0 - 32,0	25,0 - 32,0	-	BDPX-37-22	1000
45	30,6	20,2	43,3	11,9	-	-	-	22,0 - 38,0	BDPX-45-21	1000
	38,0	20,2	43,3	11,9	30,0 - 38,0	31,0 - 38,0	31,0 - 38,0	-	BDPX-45-22	1000
52	34,6	22,5	51,0	16,0	-	-	-	28,0 - 44,0	BDPX-52-21	1000
	44,2	22,5	51,0	16,0	34,0 - 44,0	35,0 - 44,0	35,0 - 44,0	-	BDPX-52-22	1000

*Only for Lyra, Hi-Lyra and Vega.